

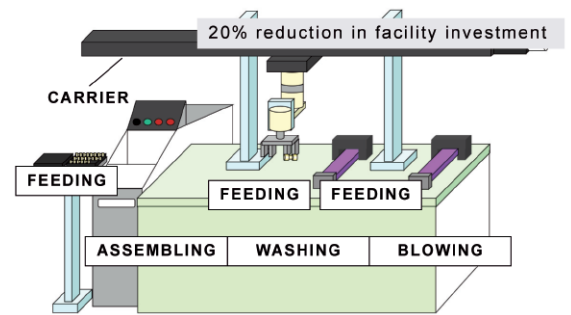
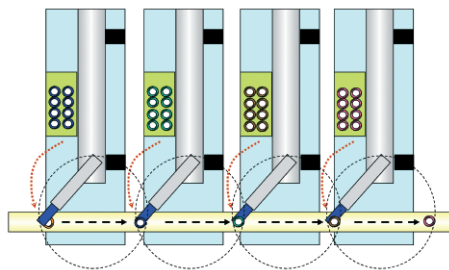


DENSO

THE FLEXIBLE STANDARD SOLUTION



**IDEAL FOR
SMALL SYSTEMS**



XR-SERIES ASSEMBLING & HANDLING / FEEDING & CARRIER

IDEAL FOR SMALL SYSTEMS Achieve compact systems with integrated Compact Robot

COMPACT STRUCTURE Ceiling-mount configuration for maximum working area; reduced width of equipment

HIGH SPEED – 17 % FASTER Than our conventional cartesian robots with combined move of coordinated slide & swivel motions

LOWER INVESTMENT Eliminate additional devices to lower costs



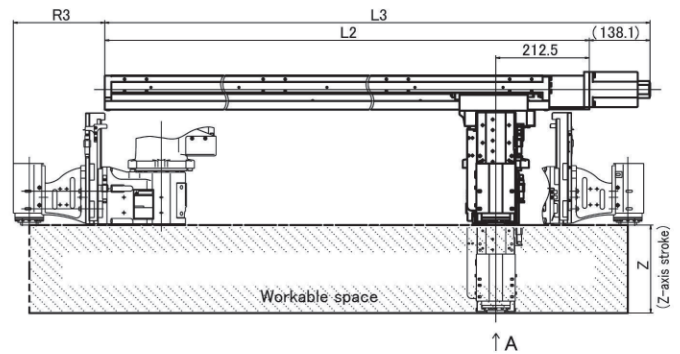
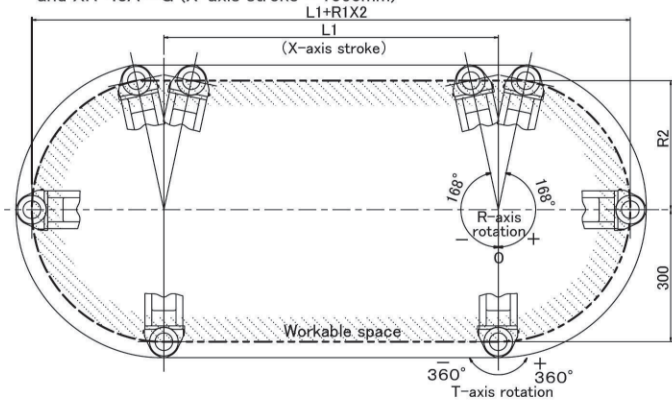
DENSO

MAIN SPECIFICATIONS XR-SERIES



Item	Basic Model						
Model name of robot set	XR-43411G	XR-43711G	XR-43721G	XR-43731G	XR-43A11G	XR-43A21G	XR-43A31G
Model name of robot unit	XR-43411GM	XR-43711GM	XR-43721GM	XR-43731GM	XR-43A11GM	XR-43A21GM	XR-43A31GM
Arm length	200mm	200mm	250mm	300mm	200mm	250mm	300mm
Motion angle and stroke	X axis	450mm	760mm			1060mm	
	R axis	±168°					
	Z axis	135mm					
	T axis	±360°					
Axis combination	X axis + R axis + Z axis + T axis						
Maximum payload	3 kg						
Maximum composite speed	At the center of the hand (X+R)	3650mm/s	3600mm/s			3240mm/s	
	Z and T	Z: 1500mm/s T: 720°					
Position repeatability	X + R	±0.015mm					
	Z	±0.010mm					
	T	±0.005mm					
Maximum allowable inertia moment	0.03 kg/m ²						
Position detection	Absolute encoder						
Drive motor and brake	AC servo motors for all axes, Brake for Z-axis						
Break releasing	Enter a brake release command with the teach pendant or mini-pendant						
User air piping	Air supplying part Ø 8x1 Option: When the manifold valve is mounted 4 systems (Ø 4x4)						
User signal line	10 (for proximity sensor signals, etc)						
Air source	Operating pressure	0.05 to 0.35MPa					
	Maximum allowable pressure	0.59MPa					
Weight	Approx. 33 kg (Approx. 72lb)	Approx. 45 kg (Approx. 99lb)	Approx. 46 kg (Approx. 101lb)	Approx. 47 kg (Approx. 103lb)	Approx. 51 kg (Approx. 112lb)	Approx. 52 kg (Approx. 114lb)	Approx. 53 kg (Approx. 116lb)

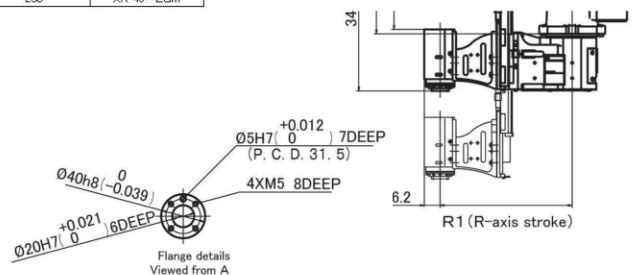
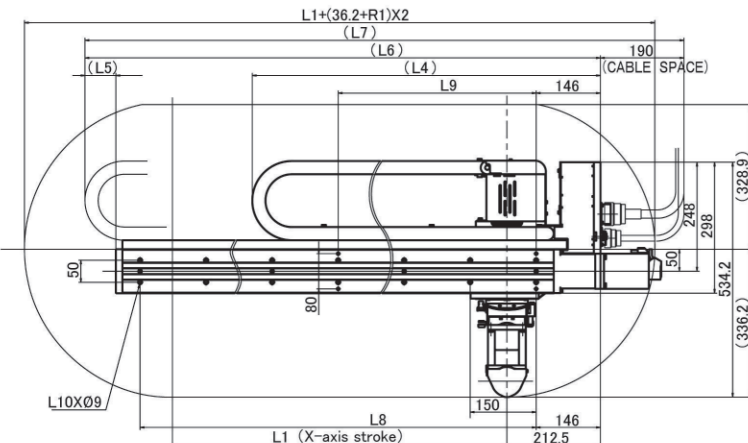
Outer Dimensions and Workable Space of the XR-437**G (X-axis stroke = 76 and XR-43A**G (X-axis stroke = 1060mm)



L1(X-axis stroke)	Model	L2	L3	L4	L5	L6	L7	L8	L9	L10	(mm)
760	XR-437**GM	1101	1239.1	791.2	70.2	1171.2	1361.2	6X1 50-900	490	14	
1060	XR-43A**GM	1401	1539.1	913.7	42.7	1443.7	1633.7	6X1 50-1200	600	18	

R1(R-axis arm length)	Model	R2	R3
200	XR-43*1*GM	195.6	107.7
250	XR-43*2*GM	244.6	157.7
300	XR-43*3*GM	293.4	207.7

Z(Z-axis stroke)	Model
135	XR-43*1*GM
200	XR-43*2*GM



Detailed drawing of end-effector mounting face (View: D)

UNIT: MM