



DENSO

THE FLEXIBLE STANDARD SOLUTION



VM-SERIES 1000 - 1300mm

HIGH SPEED Top performance in its class, with a cycle time of 0.89 seconds

HIGH POWER One of the highest applicable maximum moment of inertia in its class

ABUNDANT VARIATIONS IP54/65 and Clean room class 10

DOWNSIZED BODY Minimizing interference with surrounding equipment

CEILING MOUNTING Each model can be used as ceiling mounted

LIGHT WEIGHT Arm weights less than 85 kg which allows light weight construction cells

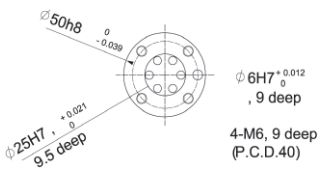
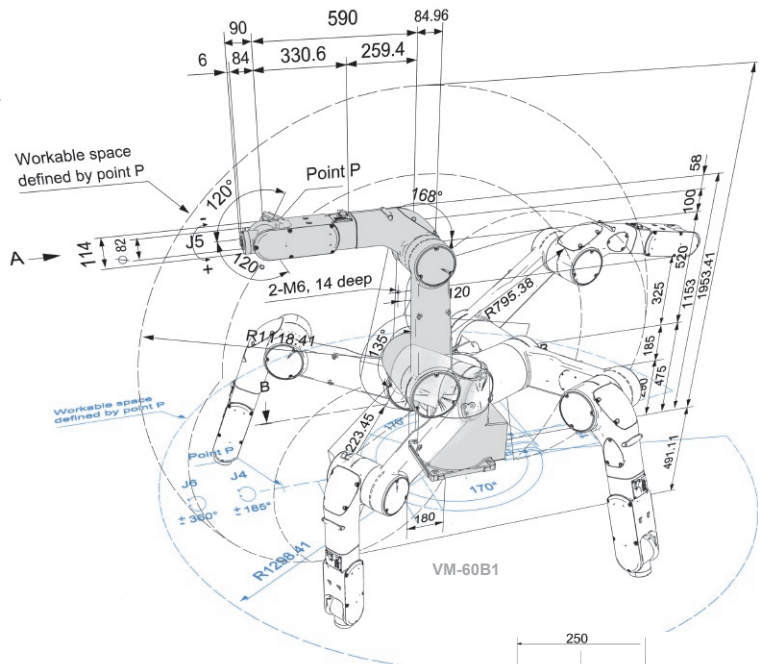
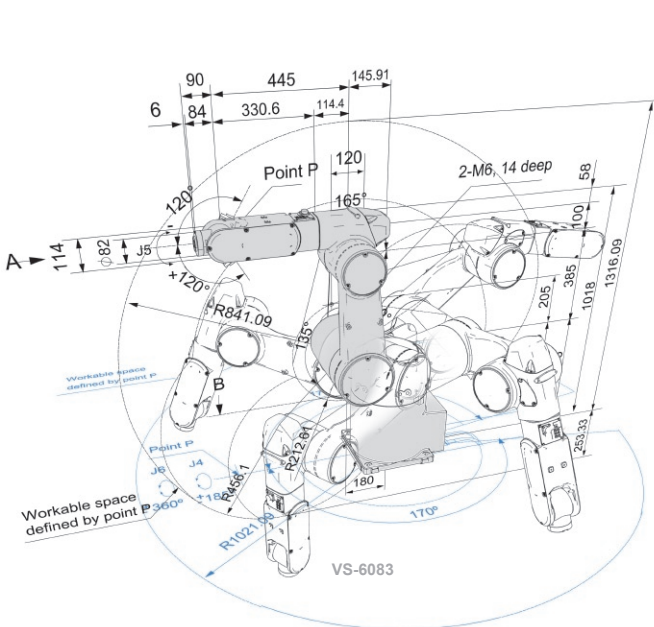


DENSO

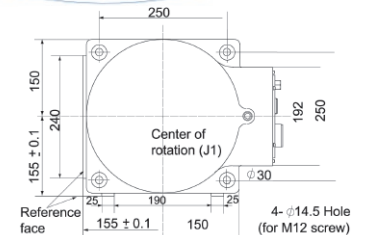
MAIN SPECIFICATIONS VM-SERIES 1000 - 1300mm



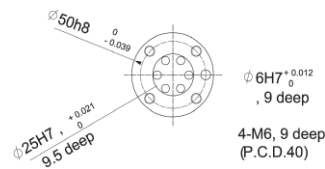
	VM-6083	VP-60B1
Reach (till center 5th axis):	1000mm	1300mm
Number of axis:	6	6
Maximum payload:	10 kg	10 kg
Composite maximum speed:	8300mm/sec	8300mm/sec
Cycle time:	0.8 sec	0.9 sec
Position repeatability:	±0.05mm	±0.07mm
Max. moment of inertia:	J4/J5: 0.36 kg/m ² J6: 0.064 kg/m ²	J4/J5: 0.36 kg/m ² J6: 0.064 kg/m ²
Total weight (approx):	80 kg	82 kg
Motion angle:	J1: ±170°, J2: ±135° - 90°, J3: VM-6083 +165° -80°, VP-60B1 +168° -80°, J4: ±185°, J5: ±120°, J6: ±360°	
Protection class:	Standard: IP40, option: IP54/65, CC-10	
Brakes:	2nd, 3rd, 4th, 5th and 6th axis	
Position detection:	Absolute encoder	
Wiring (integrated in arm):	10 lines (max. 1Amp, for signaling)	
Air piping (integrated in arm):	7 systems (Ø4x6, Ø6x1), 3x2-pos. double solenoid valves	



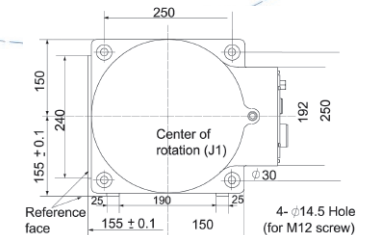
Detailed drawing of end-effector mounting face (View: A)



Detailed drawing of base mounting face (Top View)



Detailed drawing of end-effector mounting face (View: A)



Detailed drawing of base mounting face (Top View)

unit: mm